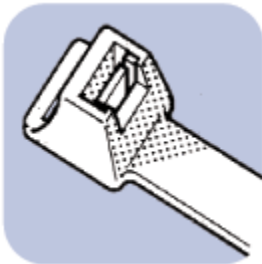




Cable Ties Range - External

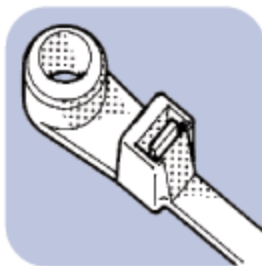
Lashing Cable Tie



Features two holes at the head to make the fastening of wires or cables sturdy and to create a neat presentation by tying up the loose end.

PART NO.	LENGTH	WIDTH	MAX Ø	TENSILE STRENGTH	PKG QTY
ARTIKEL NR.	LÄNGE	BREITE		ZUGFESTIGKEIT	PACK
	mm (in)	mm (in)	mm (in)	kgs (lbs)	
GT-430LTC	430(16.9)	12.7(0.5)	127(5)	113.5(250)	100
GT-580LTC	580(22.8)		152(6)		
GT-730LTC	728(28.7)		204(8)		
GT-880LTC	885(34.8)		254(10)		
GT-1030LTC	1025(40.4)		307(12.1)		

Mountable Head Tie



The Mountable Head Tie can be screwed on or bolted down in order to secure the bundled harness to panels or other surfaces. It can be repositioned before final assembly.

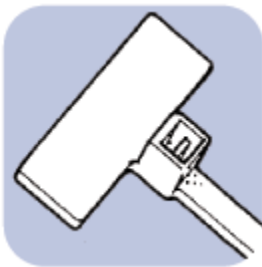
PART NO.		LENGTH	WIDTH	MAX Ø	TENSILE STRENGTH
ARTIKEL NR.		LÄNGE	BREITE		ZUGFESTIGKEIT
1000PACK	100PACK	mm (in)	mm (in)	mm (in)	kgs (lbs)
GTM-150I	GTM-150IC	151(5.9)	3.6(0.14)	32(1.2)	18.2(40)
GTM-200ST	GTM-200STC	202(8.0)	4.8(0.19)	54(2.1)	22.2(50)
GTM-300ST	GTM-300STC	319(12.6)		76(3)	
	GTM-200HDC	203(8.0)	7.6(0.3)	50(2)	120(54.5)
	GTM-300HDC	305(12)		76(3)	
	GTM-380HDC	380(15)		104(4.1)	

Marker Ties



With intergraded marking pad below the head. Provides neat, permanent identification for wire bundles. The marking pad can either be heat-stamped or marked with a permanent ink pen.

PART NO.		LENGTH	WIDTH	MAX Ø	TENSILE STRENGTH	MARKING PAD SIZE
ARTIKEL NR.		LÄNGE	BREITE		ZUGFESTIGKEIT	BESCHRIFTUNGSFELDES
1000 PACK	100 PACK	mm (in)	mm (in)	mm (in)	kgs (lbs)	L X W (mm X mm)
GTK-100M	GTK-100MC	98(3.9)	2.5(0.1)	20(0.7)	8.1(18)	8 x 25.4
GTK-200M	GTK-200MC	202(8)	2.5(0.1)	50(2)	8.1(18)	8 x 25.4



With Overhead marking pad.

PART NO.		LENGTH	WIDTH	MAX Ø	TENSILE STRENGTH	MARKING PAD SIZE
ARTIKEL NO.		LÄNGE	BREITE		ZUGFESTIGKEIT	BESCHRIFTUNGSFELDES
1000 PACK	100 PACK	mm (in)	mm (in)	mm (in)	kgs (lbs)	L X W (mm X mm)
GTK-110M	GTK-110MC	110(4.3)	2.5(0.1)	20(0.7)	8.1(18)	9.2x20.5
GTK-210M	GTK-210MC	210(8.3)	2.5(0.1)	50(2)	8.1(18)	9.2x20.5



With intergraded marking pad along side of the tie. can provide cost-effective printing on both cable ties and marker ties (minimum order quantities apply). uses hot foil stamping to produce fade resistant characters. Imprinting is available in a wide selection of characters as well as in various colors on nearly all cable tie sizes. Logos, and sequential/non-sequential numbers can also be printed.

PART NO.		LENGTH	WIDTH	MAX Ø	TENSILE STRENGTH	MARKING PAD SIZE
ARTIKEL NO.		LÄNGE	BREITE		ZUGFESTIGKEIT	BESCHRIFTUNGSFELDES
1000 PACK	100 PACK	mm (in)	mm (in)	mm (in)	kgs (lbs)	L X W (mm X mm)
GTK-190ST	GTK-190STC	194(7.6)	4.8(0.19)	45(1.75)	22.2(50)	27.3 x 13
GTK-270ST	GTK-270STC	275(10.8)	4.8(0.19)	68(2.67)	22.2(50)	27.3 x 13
GTK-340ST	GTK-340STC	345(13.6)	4.8(0.19)	92(3.6)	22.2(50)	27.3 x 13

Push Mount Tie



Features a triangular shaped head that can be pushed into a pre-drilled hole (4.8mm) to secure the bundled harness in place.



PART NO.	LENGTH	WIDTH	MAX Ø	TENSILE STRENGTH	PKG QTY
ARTIKEL NR	LÄNGE	BREITE		ZUGFESTIGKEIT	
	mm (in)	mm (in)	mm (in)	kgs (lbs)	
GTP-150I	151(5.94)	3.6(0.14)	32(1.2)	18.2(40)	100
GTP-200ST	200(7.87)	4.8(0.19)	50(2)	22.2(50)	100

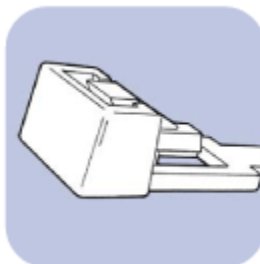
External Cable Tie



Sideway locking mechanism, suitable for outdoor usage.
 Material: Nylon 12 (Only available in Pigmented black).
 Temperature range: operating temp. (after the mounting) -45°C to +80°C ,
 mounting temp. -25°C to +60°C .
 Inflammability rating: UL 94 HB.

PART NO.	LENGTH	WIDTH	MAX Ø	TENSILE STRENGTH	PKG QTY
ARTIKEL NR	LÄNGE	BREITE		ZUGFESTIGKEIT	
	mm (in)	mm (in)	mm (in)	kgs (lbs)	
GET-160HDC	182(7.17)	9(0.35)	43(1.69)	35(77)	100
GET-270HDC	263(10.35)		65(2.56)	51(112)	
GET-360HDC	357(14.06)		93(3.66)	51(112)	

Releasable Cable Tie



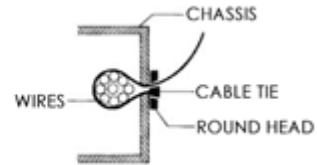
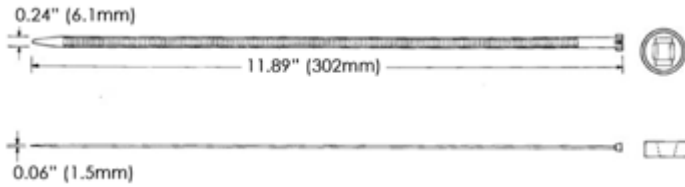
Features an integrated release tab to allow the cable tie to remain locked until intentionally released. Particularly suitable for situations where temporary fastening is required.
 Easy to use: Push to Release system.

PART NO.	LENGTH	WIDTH	MAX Ø	TENSILE STRENGTH	PKG QTY
ARTIKEL NR	LÄNGE	BREITE		ZUGFESTIGKEIT	
	mm (in)	mm (in)	mm (in)	kgs (lbs)	
GTRN-150HDC	150(5.91)	76(0.30)	35(1.38)	22.2(50)	100
GTRN-200HDC	200(7.87)		50(1.97)		
GTRN-300HDC	300(11.81)		80(3.15)		
GTRN-370HDC	370(14.57)		102(4.02)		

Relievable Cable Tie



A practical system specifically developed for the automobile industry to fasten wires and cables. It fits in one chassis hole where the wiring runs. Permits the unfastening of the cable tie to facilitate the necessary alterations until final decision.



PART NO.	LENGTH	THICKNESS	WIDTH	MAX Ø	TENSILE STRENGTH
ARTIKEL NR	LÄNGE	DICKE	BREITE		ZUGFESTIGKEIT
	mm (in)	mm (in)	mm (in)	mm (in)	kgs (lbs)
GTRH-300HDC	302(11.89)	1.5(0.06)	6.1(0.24)	85(3.35)	30(66.1)

Universeal UK Ltd
 Universeal Products Ltd
 Cheshire, UK

Tel: (44) (0) 1829 76 0000
 Fax: (44) (0) 1829 76 0011
 sales@universeal.co.uk

www.universeal.co.uk